

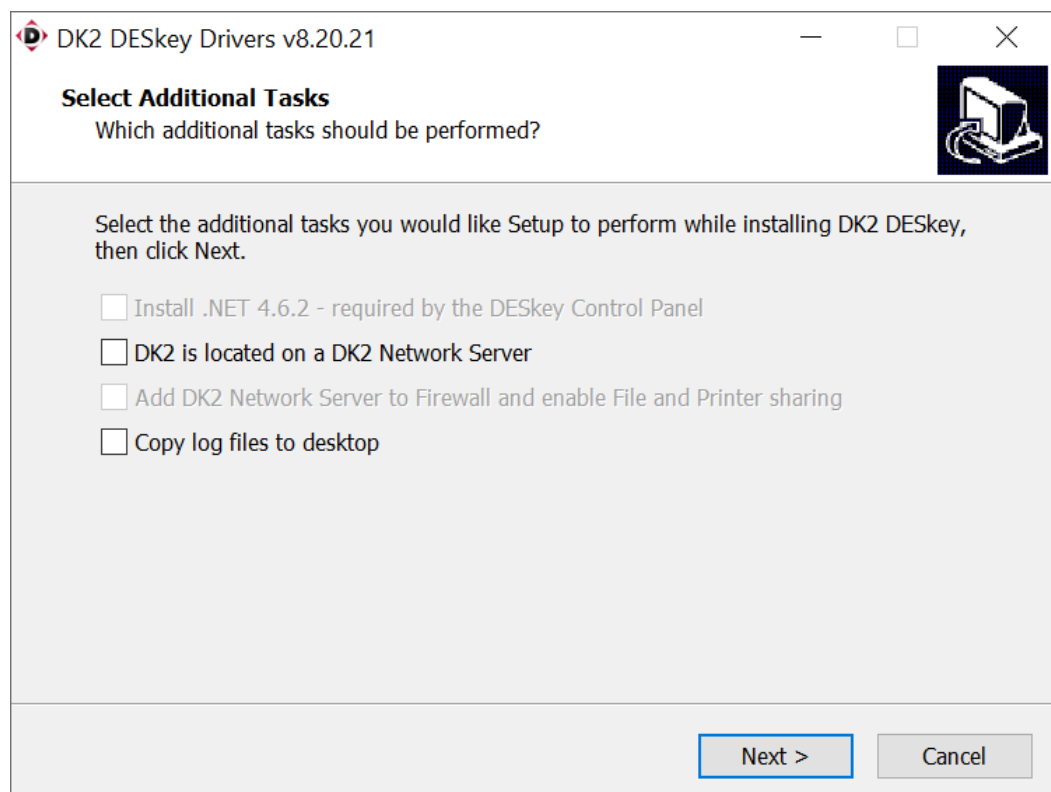
# Technical Note

## Dongle Installation Guide

### 1 Single User / Local Machine Dongle

Follow these steps to install a single user / local machine dongle:

1. Remove the dongle from the PC. (This step is very important as failure to do this could result in it failing to be recognised by the software following the installation of the new device drivers).
2. Download the dongle drivers from [http://www.transfinite.com/maintenancerelease/dk2win3264\\_8.20.21.zip](http://www.transfinite.com/maintenancerelease/dk2win3264_8.20.21.zip) and save it to your hard disk.
3. Install the new device drivers by unzipping the downloaded file then running dk2win3264\_8.20.21.exe.
4. Ensure the "DK2 is located on a DK2 Network Server" option is UNCHECKED (as below)



5. Reboot the PC.
6. Insert the USB dongle into a suitable USB port.
7. If you get the "Found New Hardware" wizard when you insert the dongle make sure that "Install the software automatically" option is selected and press "next". This should correctly match the installed driver to the dongle.

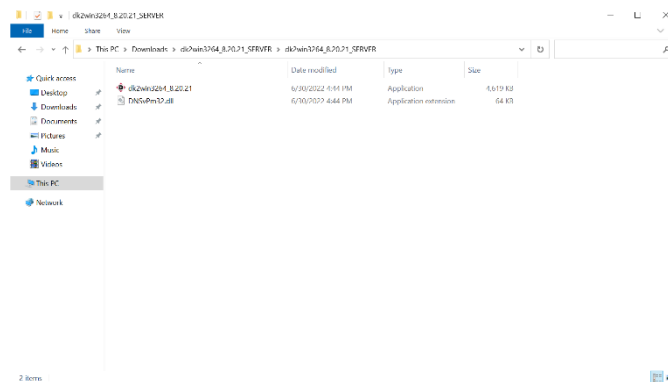
## 2 Multiple User / Network Dongle.

For the Multiple User / Network Dongle installation the server PC must be on a network that is visible to other users. Note: Should the network become unavailable at any point then the software will not be licenced and the user should save the file they are working on and correct the network problem.

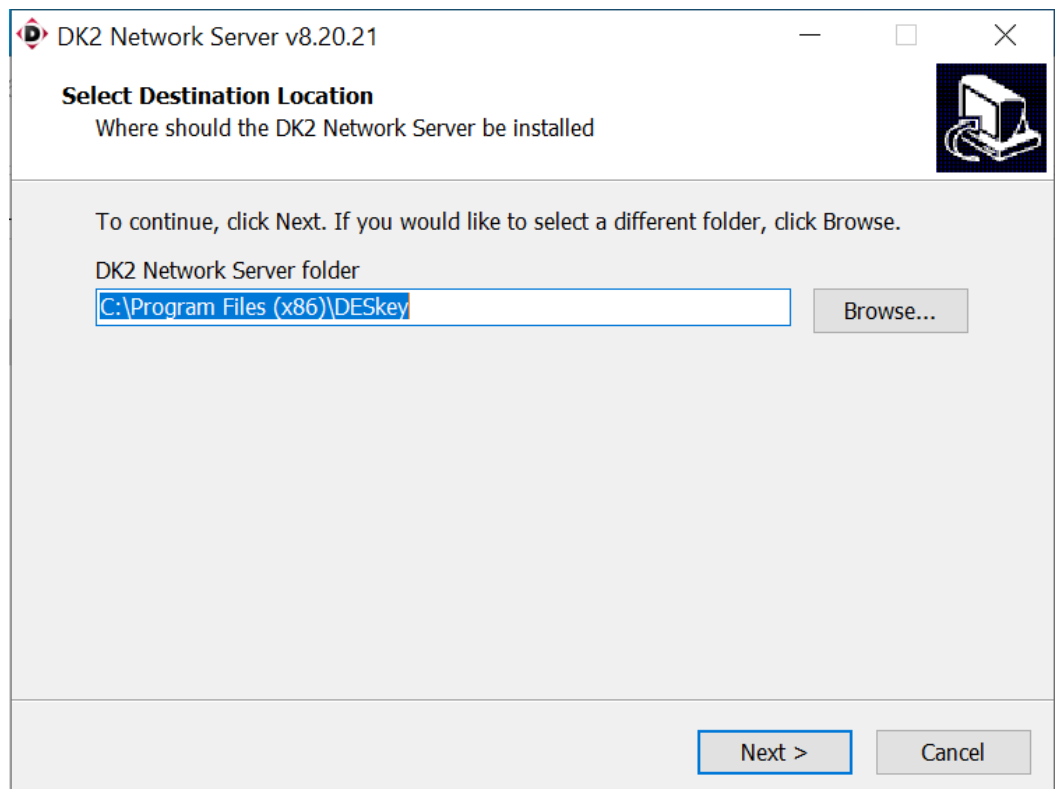
### 2.1 Server Installation

Follow these steps to install a multiple user / network dongle:

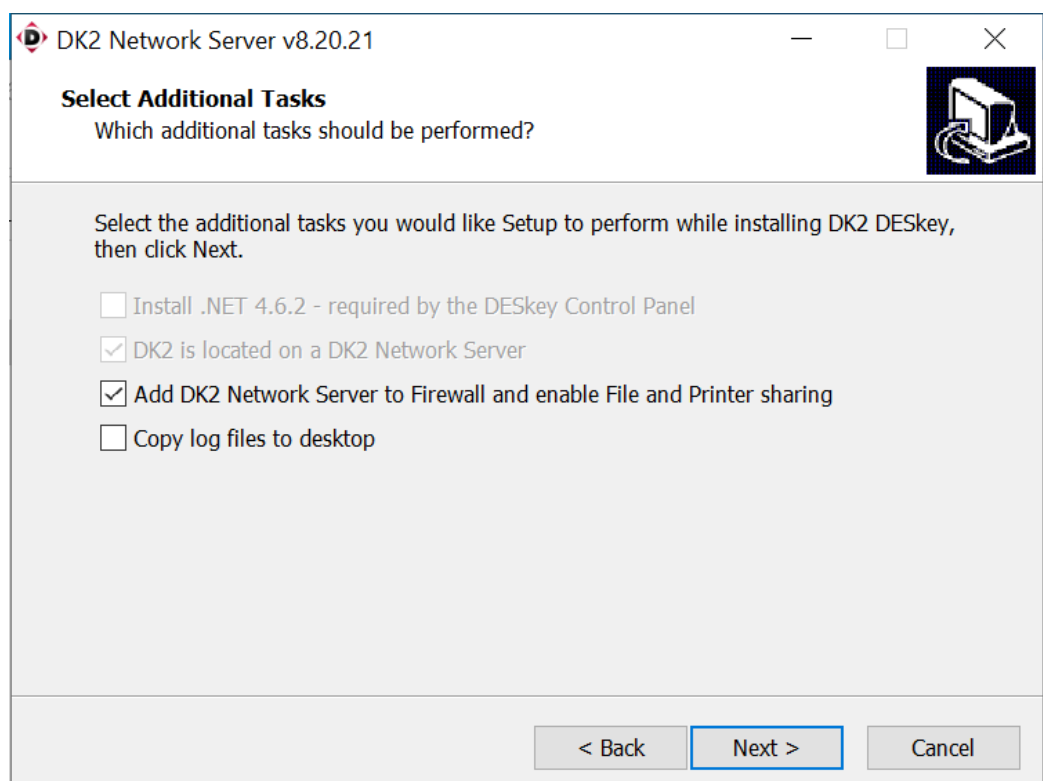
1. Remove the dongle from the PC. (This step is very important as failure to do this could result in it failing to be recognised by the software following the installation of the new device drivers).
2. Download the Network Server installation from [https://www.transfinite.com/maintenancerelease/dk2win3264\\_8.20.21\\_SERVER.zip](https://www.transfinite.com/maintenancerelease/dk2win3264_8.20.21_SERVER.zip) and save it to your hard disk.
3. Unzip dk2win3264\_8.20.21\_SERVER.zip and navigate to the directory



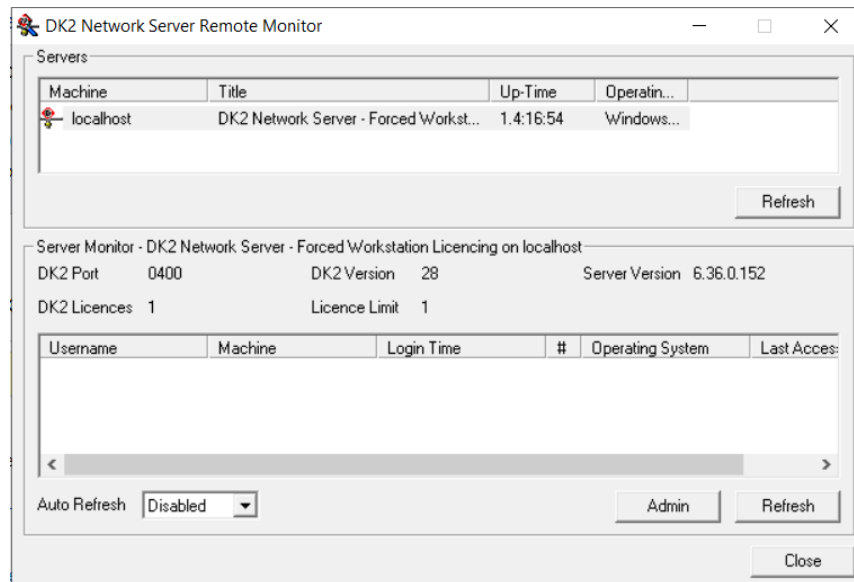
4. Run the installation program dk2win3264\_8.20.21.exe.
5. Install in the default location



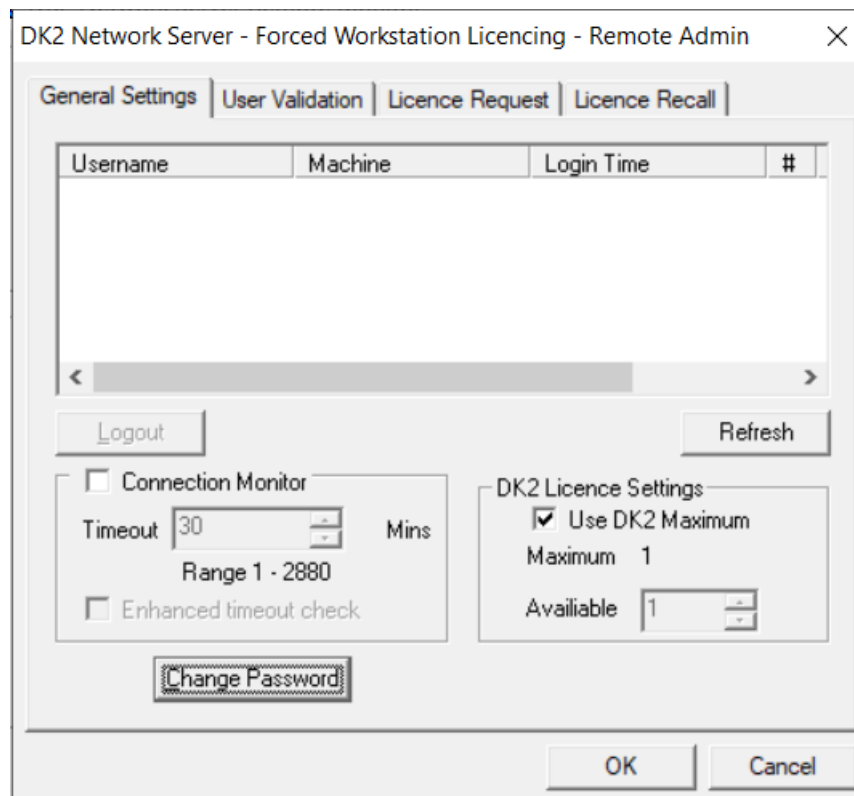
6. Ensure the “Add DK2 Network Server to the Firewall and enable File and Printer sharing” option is selected (as below)



7. Insert the USB dongle into a suitable USB port.
8. Start the “DK2 Network Server Monitor” Program



- Click on the “Admin” button and enter the password “deskey”

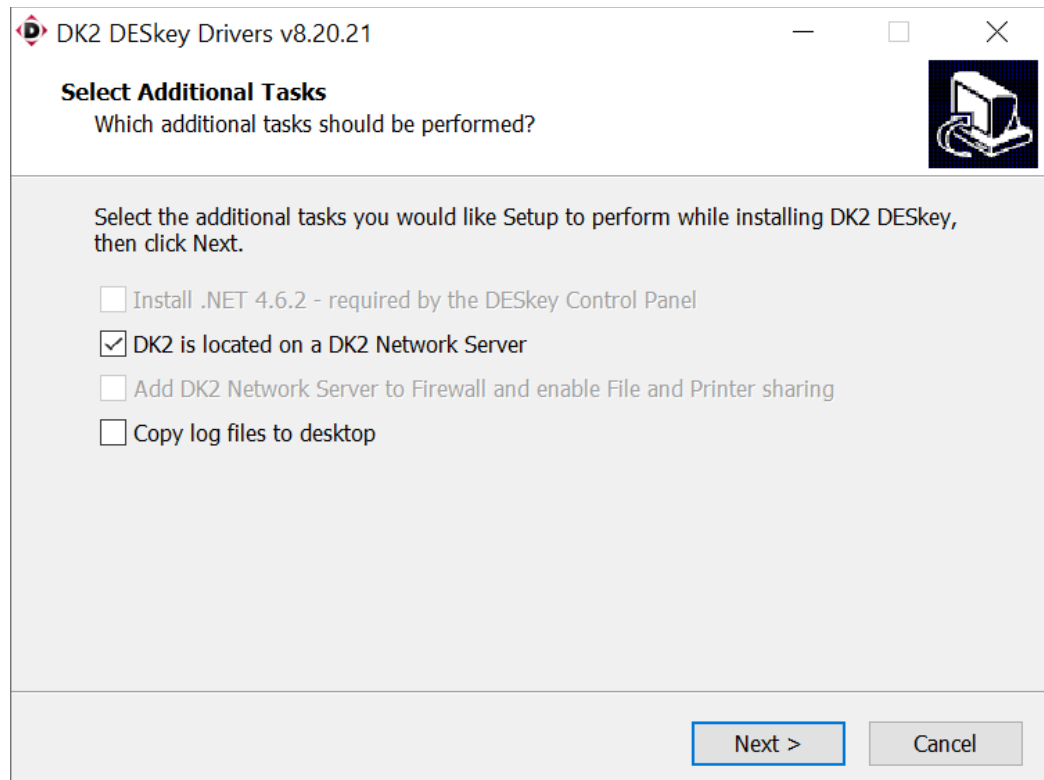


- Click on “Change Password” and enter a new password for this installation.
- Close the application.

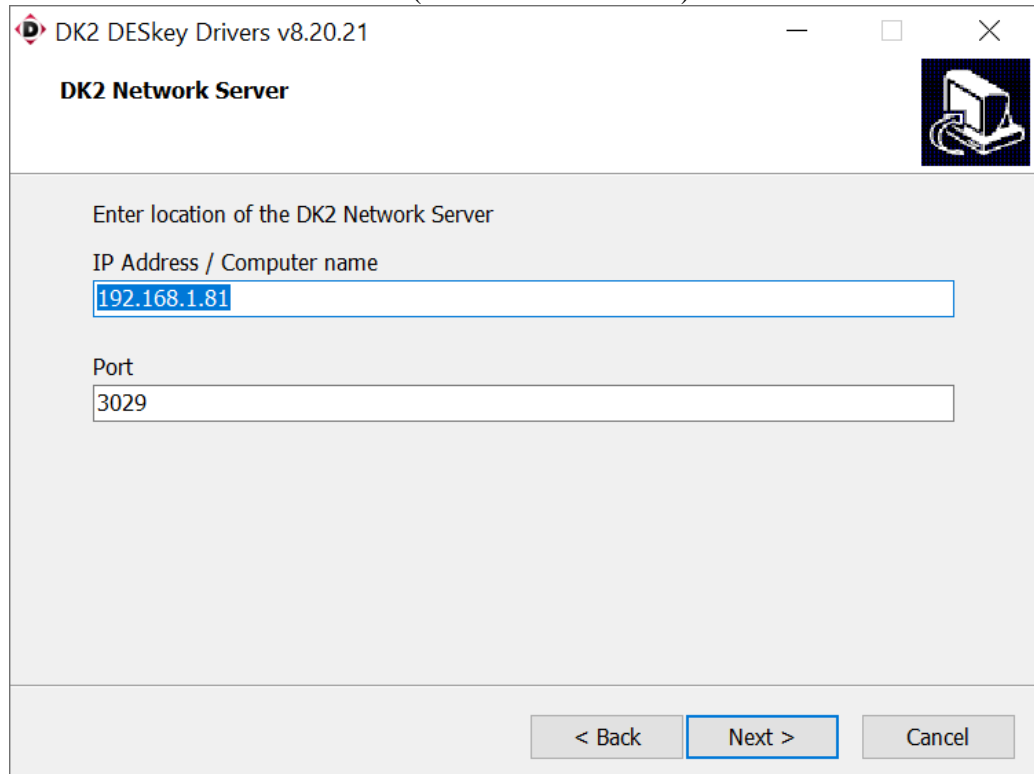
## 2.2 Client Installation

Follow these steps to install a multiple user / network dongle:

1. Download the dongle drivers from [http://www.transfinite.com/maintenancerelease/dk2win3264\\_8.20.21.zip](http://www.transfinite.com/maintenancerelease/dk2win3264_8.20.21.zip) and save it to your hard disk.
2. Install the new device drivers by unzipping the downloaded file then running dk2win3264\_8.20.21.exe.
3. Ensure the “DK2 is located on a DK2 Network Server” option is CHECKED (as below)



4. Enter the IP address of the Server (leave the Port as 3029)

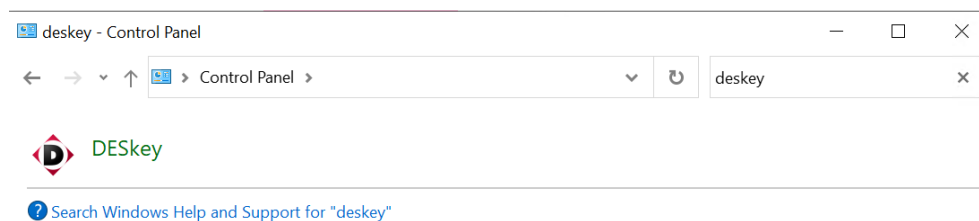


The screenshot shows a window titled "DK2 DESkey Drivers v8.20.21" with a sub-header "DK2 Network Server". The window contains two input fields: "IP Address / Computer name" with the value "192.168.1.81" and "Port" with the value "3029". At the bottom, there are three buttons: "< Back", "Next >", and "Cancel".

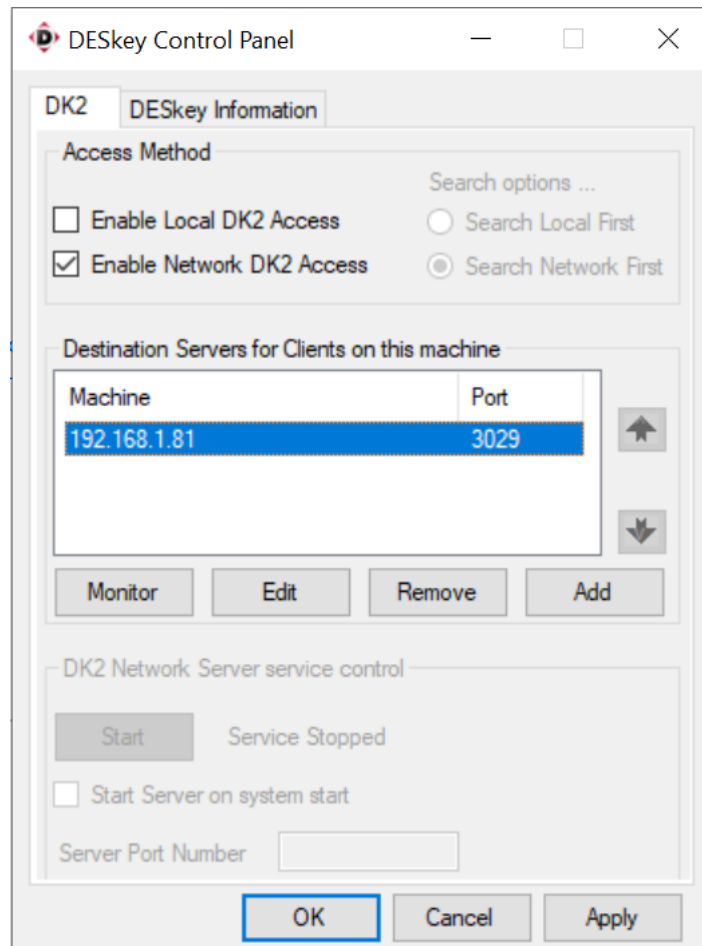
### 2.3 Client / Server Licence Monitoring

The client can monitor if there is an available licence on the server dongle by following these steps:

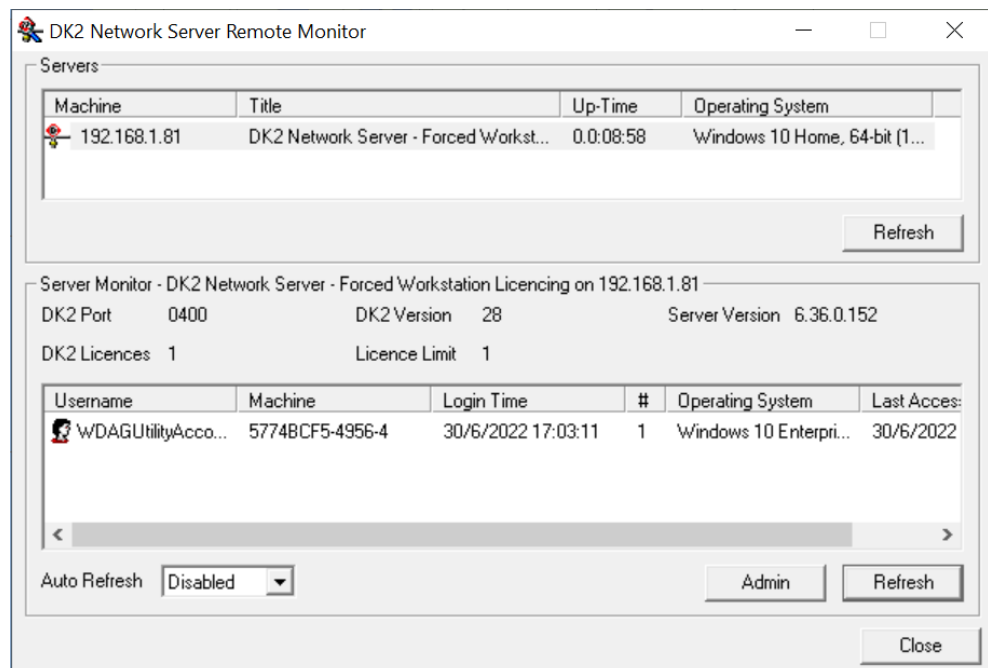
1. Open "Control Panel" and run the "DESkey" program.



2. Select the Network Server and then click "Monitor".



- The resulting dialog shows how many licences are available on the server and how many are in use (plus the details of who is using the licences)



- If they user has permission (i.e. knows the password) they can click on “Admin” and “logout” users who are using one of the available licences on the network dongle.